

PUTTING THE PIECES TOGETHER ON AUTISM



1 in 88

IT IS THE FASTEST-GROWING
developmental disability in the US,
now diagnosed in 1 of 88 children.

**IT'S CHARACTERIZED BY SOCIAL
IMPAIRMENTS, INCLUDING:**



lack of eye
contact



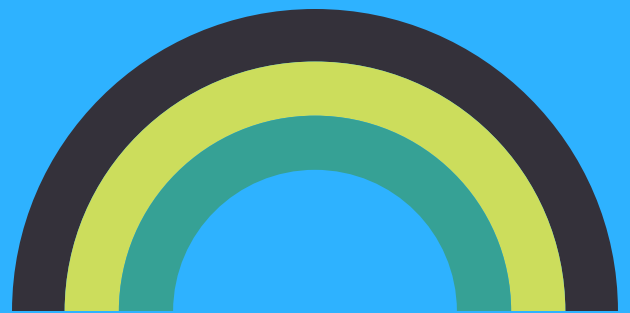
inability to take
another perspective



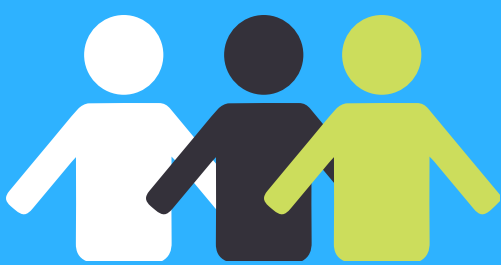
speech
deficits

...BUT THOSE ARE ONLY A FEW SIGNS...

**AND SYMPTOMS EXIST ON
A SPECTRUM,**
meaning that some people
struggle more than others.



**BUT EVERY PERSON STRUGGLES WHEN THEY
FEEL STIGMATIZED. SO HOW CAN YOU SHOW
YOUR SUPPORT?**



**TREAT EACH PERSON AS AN
INDIVIDUAL, NOT A DIAGNOSIS**

No 2 people experience autism the
same way.



EMPATHIZE

Regardless of ability, everyone
struggles to connect socially
sometimes.



ADVOCATE FOR RESEARCH

and create a more fair world
for people of all abilities.