



Make A Match



Inside This Issue:

Make A Match

Another Step
Forward

Congratulations,
Melissa Crew

CSF Fundraising in
Action

Advocacy Center
Success for LifeStyles
Academy

Welcome Alyssa

Welcome Becky

Coming Soon: The
Painted Turtle

The Backyard
Olympics

Yankee Candle
Fundraiser

A Message from the Executive Director

Community Service Foundation (CSF) is proud to announce the 14th annual Make A Match Campaign, which will take place from November 1, 2016 through December 31, 2016. CSF has been running this campaign since 2002 and is excited to once again partner with our community in an effort to raise money for individuals with disabilities. This campaign gives our generous supporters the chance to see their donation doubled, as CSF matches all contributions received.

Every year, the Make A Match Campaign highlights the significant impact that collaboration has, as CSF matches each donation, up to \$1,000 for individual donations and up to \$500 for corporate donations. Through our collaborative efforts last year, we were able to raise \$39,490 for member agencies. This year, CTF ILLINOIS will allocate their funds to various program enhancements as well as weekend trips for individuals, while LifeStyles Academy plans to use their funds to improve transportation.

In addition to the annual Make A Match Campaign run through CSF, we are thrilled to announce that The Coleman Foundation has selected CTF ILLINOIS to participate in the #ILGIVE Matching Grants Program, which will take place on Tuesday, November 29, 2016. This means that any donation received by CTF ILLINOIS on this date will not only be matched by CSF, but will also be matched by the Coleman Foundation. In essence, your donation will not just double if you give on this date: it will triple! Through collaborative campaigns like these, we can work together to make an even greater difference for individuals with disabilities. As more information becomes available, we will be sure to keep you informed on the #ILGIVE campaign.

We hope that you will consider contributing to CTF ILLINOIS or LifeStyles Academy during this holiday season. Included, you will find an envelope for your desired contribution. You may also choose to donate online at www.csfil.org. Donations are deductible to the extent allowed by IRS codes. Thank you for your continued support of our mission and, most importantly, working with CSF to make a difference in the lives of individuals with disabilities through Make A Match.

Sincerely,

Mary Pat Ambrosino
Executive Director

Deadline for 2016 Tax Deduction is December 31, 2016

Another Step Forward

Community Services Foundation is excited to announce that CTF ILLINOIS (CTF) will be transitioning from its current CARF accreditation to CQL (The Council on Quality and Leadership) in an effort to improve the overall supports that individuals receive. CTF will be one of fourteen agencies in Illinois to make the commitment to CQL. CQL is a company that works with human service organizations to help improve quality of life and quality of service. They offer training services that share their vision of dignity, opportunity, and community. CQL's mission is dedicated to the definition, measurement, and improvement of personal quality of life.

CQL operates using POM (Personal Outcome Measures), which identifies people's quality of life outcomes, plans support, and gathers information and data about individual outcomes.

Personal – Starts with the person's own view of his or her life

Outcome – Defines what is important to the person

Measures – Offers objective determination of whether people are achieving what is personally important

While CARF has been more focused on the programs themselves, CQL gives a more individualized approach. Here's a look at a few differences between both accreditation programs:

CARF

- The focus is on program standards
- Service action is based on professional criteria
- The person is assigned to a program
- Expectations for performance are defined by the program

CQL

- The focus is on the person
- Service action is based on the person's criteria
- Supports are designed for the person
- Expectations for performance are defined by the person

CTF is making this change because the CQL accreditation process is more fitting to CTF's mission: empowering each individual we serve to live the life they want to live. CTF would like to thank the board along with staff members, friends, and family for their cooperation through this transition. Transitioning to CQL means that CTF will be held to tougher standards, but it will also greatly improve the services available to individuals with developmental disabilities. We are proud that CTF ILLINOIS is taking another step toward becoming truly person-centric. If you would like to learn more about CQL, feel free to visit the website at www.c-q-l.org.

Congratulations, Melissa Crew!

On behalf of Community Services Foundation, we would like to congratulate Melissa Crew, a Direct Support Professional (DSP) at CTF ILLINOIS, on her recent accomplishment: The IARF Community Care Professional of the Year Award! This inaugural award was established by IARF to recognize excellence in care from a frontline staff member. Melissa's never-ending passion for her work and the commitment she has to the individuals and families she supports helped her to secure this coveted award, and she was recognized during the 2016 IARF Conference and Expo in Bloomington on October 20, 2016. Congratulations, Melissa! We could not think of a more deserving person for this award.



SAVE
the dates

Giving Tuesday
NOV. 29, 2016

2nd Annual ACT Bowl
FEB. 19, 2017

3rd Annual MuseFest
JUNE 3, 2017

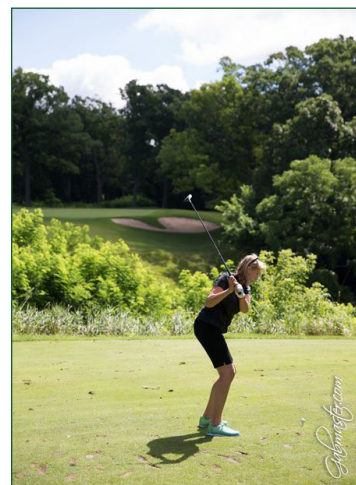
8TH ANNUAL JERRY MEYER GOLF CLASSIC
JULY 21, 2017

CSF Fundraising in Action

Community Services Foundation (CSF) is proud to host several fundraising events, all of which benefit individuals with diverse disabilities. Take a look at some of the most recent events which, together, raised more than \$44,500 for programs and services of CTF ILLINOIS.

Jerry Meyer Golf Classic

The 7th Annual Jerry Meyer Golf Classic was held on July 15, 2016 at Cog Hill Golf and Country Club in Lemont. Golfers chose between Course No. 2 and Dubsdread, famous for hosting several PGA and LPGA Tournaments. They also participated in games such as the Chip-In Challenge, Longest Drive, and the Hole-In One Challenge, which gave participants a chance to win a car! After their rounds, a barbeque was held where attendees were able to purchase raffle tickets for twenty different prizes and place bids on more than thirty silent auction items. In total, the Golf Classic raised over \$36,000. Jerry Meyer was a dedicated supporter of CSF. He helped secure funds to open our doors in 1989 and continued his support until his passing in 2012. We were proud to honor him through this year's Golf Classic and are excited to continue to carry on his legacy next year on Friday, July 21, 2017.



MuseFest

On August 13, 2016, CSF hosted the 2nd Annual MuseFest. The event was created last year to celebrate local art, artists, and entertainment in the Charleston, IL area. Taking place next to the 9 Muses Art Studio in Charleston Town Square, over 50 artists showcased their artwork to the community, including artists with developmental disabilities from CTF ILLINOIS and 9 Muses. Originally scheduled for June, we were forced to reschedule due to drastic weather conditions. Despite this change, the event still received a great turnout. Along with observing and purchasing unique artwork, attendees had the opportunity to purchase raffle tickets for a chance to win a variety of prizes. Thanks to contributions from community members and sponsors, MuseFest raised over \$2,500. Be sure to save the date for next year's MuseFest, which will be held on Saturday, June 3, 2017.

Care with the Cubbies

A new event this year, CSF hosted Care with the Cubbies on September 16, 2016, where guests experienced a great day of baseball. In the morning, attendees were provided a hot, complimentary breakfast at Stoney Point Grill in Mokena. After breakfast, a charter bus took guests to Chicago's Wrigley Field for the 1:05 start time. At Wrigley, attendees enjoyed a thrilling game between the Cubs and the Milwaukee Brewers. The group was lucky enough to witness the Cubs beat the Brewers through extra innings with a final score of 5-4, and celebrate their first place finish in the central division and clinched playoff spot. After the game, the group headed to HVAC Pub for pizza and an open bar, where 30 different raffle and silent auction items were available to win and bid on. In total, the event raised over \$6,000.



For more photos or information on CSF events, please visit our Facebook page at www.facebook.com/CommunityServicesFoundationIL. For information on how you can help further our mission or get involved in future events, please contact Robin Curtner, Director of Development, at (708)429-1260 ext. 1263 or rcurtner@csfil.org.

Advocacy Center Success for LifeStyles Academy

Over the past year, LifeStyles Academy, a member agency of Community Services Foundation, has been working hard to improve the lives of the individuals they serve. Through their Advocacy Center, they have been providing services that help the individuals at the Academy "live a life like anybody else."

LifeStyles Academy developed an 8-week course called Building Employable Skills Training (B.E.S.T) that was offered over the summer. Presented by Sylvester Baugh, the program was designed to develop, strengthen, and encourage the minds and skillsets of its participants. The training assisted participants in discovering their gifts, talents, and passions in all areas of employment and job readiness.

Through its success, B.E.S.T allowed many individuals to pursue a variety of goals, from teaching guitar lessons to attending class at a local community college. One particular individual, Haley Petkus, was able to pursue her dream of becoming an Avon Representative. Hayley created her own business cards and flyers to hand out to prospective clients. In a thank you letter to the staff at LifeStyles Academy excerpted here, Haley praised her mentors and the

Academy for helping her achieve her goal by teaching her computer and communication skills.

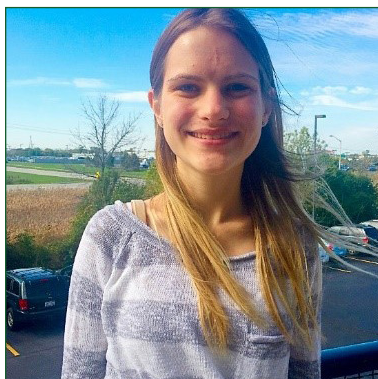
Community Services Foundation would like to thank LifeStyles Academy for the support they provide to individuals with disabilities, particularly through their Advocacy Center, where they are helping individuals discover their passions, reach their goals, and attain their dreams. For more information on LifeStyles Academy or their Advocacy Center, please contact Mike Kaminsky at (708)480-2085 or mike@lifestyle-sacademy.org.



I HAYLEY Petkus
am Now an AVON LADY!!
I Reached my goal. 😊

Welcome Alyssa

This past February, Community Services Foundation welcomed Alyssa Paetow to our organization on a part-time basis as an Administrative Assistant. A student at Alan B. Shepard High School, Alyssa was excited to come to CSF as she considers this her first, consistent form of employment. Alyssa stated that she loves coming here because everyone is nice and friendly and she wants to start saving money for her future. She will graduate from her high school program in October of 2017 and, once



she has graduated, her dream is to live on her own. An avid sightseer who loves to take pictures, Alyssa hopes to make enough money to be able to travel to new places. In her free time, she likes to see her friends whenever she can and go shopping. Welcome, Alyssa!

Welcome Becky

In July, Community Services Foundation welcomed Becky Vock as our new Director of Finance. Becky graduated from Saint Mary's College in 2007 with a bachelor's degree in Business Administration, with a concentration in Accounting. She earned CPA certification in May of 2007. Becky first began her career in the audit practice at PricewaterhouseCoopers LLP. After PwC, she worked at Information Resources Inc. and the corporate office of Hyatt Hotels. In January 2014, Becky entered the non-profit industry at Southwest Community Services, Inc. After the agency merged with CTF ILLINOIS, Becky made the transition to CSF. When she isn't working, Becky enjoys spending time with her husband Matt and two young children, running, and watching the Cubs.



MISSION STATEMENT

To develop and create opportunities for individuals with disabilities that will support and inspire independence.

Coming Soon: The Painted Turtle

Community Services Foundation is excited to unveil The Painted Turtle, a new art studio and program of CTF ILLINOIS (CTF), located in Tinley Park, IL. CTF has always valued the creativity of the individuals they serve and, with the success of 9 Muses Art Studio in Charleston, IL, they are thrilled to bring the program up north. Like 9 Muses, The Painted Turtle allows individuals with developmental disabilities to express themselves through art. The program is a form of therapy where they learn skills and techniques for various forms of art, such as painting and sculpting.

The new studio is already bustling with individuals creating a variety of artwork. In November, CTF will open the studio to the public. During normal business hours,



people will have the opportunity to view and purchase the individuals' work in the storefront and individuals will get 100% of the proceeds. After the opening, the studio will also begin hosting night and weekend events such as Wine and Paint Night and Open Mic Night. With its place in the center of town, The Painted Turtle will help foster more interaction with community members and will, thus, help individuals with disabilities achieve greater community integration.

If you would like to learn more about The Painted Turtle and their program, please contact Abbey Maloney at abbeymaloney@ctfillinois.org. You can also visit The Painted Turtle Facebook page at www.facebook.com/ThePaintedTurtleCTF.

The Backyard Olympics

On August 14, 2016, Advocates Coming Together (ACT) hosted the first annual Backyard Olympics. The Olympics joined community members and individuals with disabilities in teams, where they competed against each other in friendly games. ACT is the Young Professionals Group of Community Services Foundation whose mission is to promote true community integration for individuals with disabilities. ACT would like to thank the sponsors of the Olympics: Palos Electric Company, Integrity Trade Services, The Bulow Group, SuperHeat LLC, Jameson's Pub, Mike's Provisions, and Pete Mitchell's Bar & Grill. A special thanks to Bo Jackson's Elite Sports Dome for providing their facility for the event. Be sure to save the date for ACT's Second Annual Bowling Fundraiser: Sunday, February 19, 2017. For more information on how you can get involved with ACT or to sponsor or volunteer for an upcoming event, please contact Shelley Maxwell at (708)429-1260, ext. 2202 or mmaxwell@csfil.org.



Yankee Candle Holiday Fundraiser

Community Services Foundation is excited to announce the Yankee Candle Fundraiser going on through December. The fundraiser will give 40% of profits from Yankee Candle purchases directly to our organization. With over 150 online items to choose from, your purchase will help fund services to individuals with developmental disabilities. Prices are comparable to Yankee Candle retail stores ranging from \$6.00 to \$28.00. Through this fundraiser, we are able to give you a product you recognize and love. So this December, treat yourself to a Yankee Candle or give as a gift to friends and family! To order online, please visit www.yankeecandlefundraising.com and enter our group number (990105634) and seller ID (Community Services Foundation). Orders must be in by December 15, 2016 for guaranteed Christmas delivery. This year, get your holiday shopping done all while helping a great cause!





Community Services Foundation
6775 Prosperi Drive
Tinley Park, IL 60477

RETURN SERVICE REQUESTED

Nonprofit Org.
U.S. Postage
PAID
South Suburban, IL
Permit No. 776

CSF has designed our website to provide our readers with up-to-date regulatory, educational, and advocacy information. CSF will also be host to multiple events that will provide our communities with opportunities to learn, share, and contribute. Please make sure you add us to your favorite list and visit often at www.csfil.org.

Foundation Focus
is a publication of
Community Services Foundation,
a nonprofit corporation.
Its mission is to develop and create
opportunities for individuals with
disabilities that will support and
inspire independence.

Season's Greetings

As the holiday season draws closer, Community Services Foundation would like to thank everyone who has supported our mission to develop and create opportunities for individuals with disabilities that will support and inspire independence. Your contributions to our member agencies over the past year have greatly impacted the lives of the individuals we serve. Words cannot express how much we appreciate your support, without which we would not be able to provide individuals with disabilities the opportunities necessary to achieve their goals. We are truly grateful that you recognize the significance of our mission and hope you will consider continuing your support for the individuals we serve this holiday season. From all of us at Community Services Foundation, we wish you a wonderful holiday season and joy in the new year.



-Chris Higgins, Board Chairman

CSF BOARD OF DIRECTORS

Chris Higgins, Psy. D
Chairman

John Hayes
Vice Chairman

Jason Helfert
Secretary

Michael Salvador
Treasurer

Art Dykstra
Director

Carl La Mell
Director

Genevieve Kottemann Joy
Director